

## 信越化学工业稀土

### Shin-Etsu Rare Earths

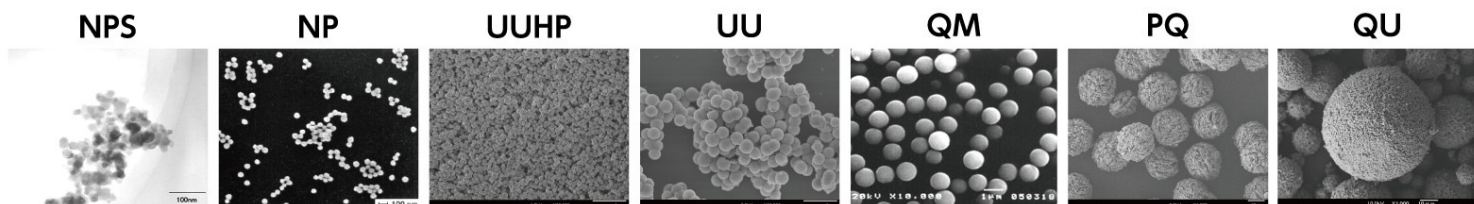
1 <b>H</b> HYDROGEN 1.0079																	2 <b>He</b> HELIUM 4.0026
3 <b>Li</b> LITHIUM 6.941	4 <b>Be</b> BERYLLIUM 9.0122											5 <b>B</b> BORON 10.811	6 <b>C</b> CARBON 12.011	7 <b>N</b> NITROGEN 14.007	8 <b>O</b> OXYGEN 15.999	9 <b>F</b> FLUORINE 18.998	10 <b>Ne</b> NEON 20.1797
11 <b>Na</b> SODIUM 22.989	12 <b>Mg</b> MAGNESIUM 24.305											13 <b>Al</b> ALUMINIUM 26.981	14 <b>Si</b> SILICON 28.085	15 <b>P</b> PHOSPHORUS 30.974	16 <b>S</b> SULFUR 32.066	17 <b>Cl</b> CHLORINE 35.453	18 <b>Ar</b> ARGON 39.948
19 <b>K</b> POTASSIUM 39.098	20 <b>Ca</b> CALCIUM 40.078	21 <b>Sc</b> SCANDIUM 44.955	22 <b>Ti</b> TITANIUM 47.867	23 <b>V</b> VANADIUM 50.9415	24 <b>Cr</b> CHROMIUM 51.9961	25 <b>Mn</b> MANGANESE 54.938	26 <b>Fe</b> IRON 55.845	27 <b>Co</b> COBALT 58.933	28 <b>Ni</b> NICKEL 58.6934	29 <b>Cu</b> COPPER 63.546	30 <b>Zn</b> ZINC 65.38	31 <b>Ga</b> GALLIUM 69.723	32 <b>Ge</b> GERMANIUM 72.63	33 <b>As</b> ARSENIC 74.921	34 <b>Se</b> SELENIUM 78.971	35 <b>Br</b> BROMINE 79.904	36 <b>Kr</b> KRYPTON 83.798
37 <b>Rb</b> RUBIDIUM 85.467	38 <b>Sr</b> STRONTIUM 87.62	39 <b>Y</b> YTRIUM 88.9058	40 <b>Zr</b> ZIRCONIUM 91.224	41 <b>Nb</b> NIOBIUM 92.9063	42 <b>Mo</b> MOLYBDENUM 95.95	43 <b>Tc</b> TECHNETIUM (98)	44 <b>Ru</b> RUTHENIUM 101.07	45 <b>Rh</b> RHODIUM 102.90	46 <b>Pd</b> PALLADIUM 106.42	47 <b>Ag</b> SILVER 107.8682	48 <b>Cd</b> CADMIUM 112.414	49 <b>In</b> INDIUM 114.818	50 <b>Sn</b> TIN 118.710	51 <b>Sb</b> ANTIMONY 121.760	52 <b>Te</b> TELLURIUM 127.60	53 <b>I</b> IODINE 126.90	54 <b>Xe</b> XENON 131.293
55 <b>Cs</b> CAESIUM 132.905	56 <b>Ba</b> BARIUM 137.327	57-71*	72 <b>Hf</b> HAFNIUM 178.49	73 <b>Ta</b> TANTALUM 180.94	74 <b>W</b> TUNGSTEN 183.84	75 <b>Re</b> RHENIUM 186.207	76 <b>Os</b> OSMIUM 190.23	77 <b>Ir</b> IRIDIUM 192.217	78 <b>Pt</b> PLATINUM 195.084	79 <b>Au</b> GOLD 196.96	80 <b>Hg</b> MERCURY 200.59	81 <b>Tl</b> THALLIUM 204.38	82 <b>Pb</b> LEAD 207.2	83 <b>Bi</b> BISMUTH 208.98	84 <b>Po</b> POLONIUM (209)	85 <b>At</b> ASTATINE (210)	86 <b>Rn</b> RADON (222)
87 <b>Fr</b> FRANCIUM (223)	88 <b>Ra</b> RADIUM (226)	89-103**	104 <b>Rf</b> RUTHERFORDIUM (267)	105 <b>Db</b> DUBNIUM (268)	106 <b>Sg</b> SEABORGIUM (271)	107 <b>Bh</b> BOHRIUM (272)	108 <b>Hs</b> HASSIUM (270)	109 <b>Mt</b> MEITNERIUM (276)	110 <b>Ds</b> DARMSTADIUM (281)	111 <b>Rg</b> ROENTGENIUM (280)	112 <b>Cn</b> COPERNICIUM (285)	113 <b>Nh</b> NIHONIO (284)	114 <b>Fl</b> FLEROVIUM (289)	115 <b>Mc</b> MOSCOVIO (289)	116 <b>Lv</b> LIVERMORIUM (293)	117 <b>Ts</b> TENNESINE (294)	118 <b>Og</b> OGANESSON (294)

57 <b>La</b> LANTHANUM 138.90	58 <b>Ce</b> CERIUM 140.116	59 <b>Pr</b> PRASEODYMIUM 140.90	60 <b>Nd</b> NEODYMIUM 144.242	61 <b>Pm</b> PROMETHIUM (145)	62 <b>Sm</b> SAMARIUM 150.36	63 <b>Eu</b> EUROPIUM 151.964	64 <b>Gd</b> GADOLINIUM 157.25	65 <b>Tb</b> TERBIUM 158.92	66 <b>Dy</b> DYSPROSIUM 162.500	67 <b>Ho</b> HOLMIUM 164.93	68 <b>Er</b> ERBIUM 167.259	69 <b>Tm</b> THULIUM 168.93	70 <b>Yb</b> YTTERIUM 173.054	71 <b>Lu</b> LUTETIUM 174.9668
89 <b>Ac</b> ACTINIUM (227)	90 <b>Th</b> THORIUM 232.0377	91 <b>Pa</b> PROTACTINIUM 231.03	92 <b>U</b> URANIUM 238.02	93 <b>Np</b> NEPTUNIUM (237)	94 <b>Pu</b> PLUTONIUM (244)	95 <b>Am</b> AMERICIUM (243)	96 <b>Cm</b> CURIUM (247)	97 <b>Bk</b> BERKELIUM (247)	98 <b>Cf</b> CALIFORNIUM (251)	99 <b>Es</b> EINSTEINIUM (252)	100 <b>Fm</b> FERMIUM (257)	101 <b>Md</b> MENDELEVIUM (258)	102 <b>No</b> NOBELIUM (259)	103 <b>Lr</b> LAWRENCIUM (262)

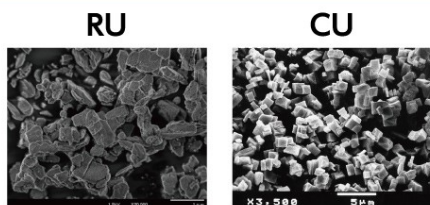
## 信越化学工业稀土氧化物产品阵容

### Product line-up of Shin-Etsu Rare Earth Oxides

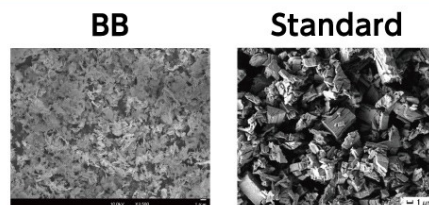
#### 球形颗粒



#### 角形颗粒



#### 其他颗粒



颗粒直径	20nm	50nm	100nm	1μm	10μm	100μm	
球形颗粒	NPS	NP	UUHP	UU	QM	PQ	QU
角形颗粒				RU	CU		
其他颗粒			BB		Standard		



我们已经更新了主页

Visit our renewed web site, and feel free to contact us more details.

<https://www.rare-earth.jp/en/>